

# Rose Ramblings



VOL. XCIV NO. 4

JOURNAL OF THE SAN DIEGO ROSE SOCIETY

APRIL 2022

Patron Member of the American Rose Society

## What's Inside?

|  |                    |
|--|--------------------|
| <a href="#">President's Message.....</a>     | <a href="#">1</a>  |
| <a href="#">April Monthly Program.....</a>   | <a href="#">2</a>  |
| <a href="#">Recording Programs.....</a>      | <a href="#">3</a>  |
| <a href="#">SDRS Pilgrimage.....</a>         | <a href="#">3</a>  |
| <a href="#">SDRS Rose Show.....</a>          | <a href="#">4</a>  |
| <a href="#">Helping with Rose Show.....</a>  | <a href="#">5</a>  |
| <a href="#">Artist Among Us.....</a>         | <a href="#">6</a>  |
| <a href="#">Our Open Gardens.....</a>        | <a href="#">7</a>  |
| <a href="#">Arrangement Class.....</a>       | <a href="#">9</a>  |
| <a href="#">Otherwise Normal People..</a>    | <a href="#">10</a> |
| <a href="#">April Rose Care.....</a>         | <a href="#">11</a> |
| <a href="#">Problem Beetles.....</a>         | <a href="#">15</a> |
| <a href="#">Membership Update.....</a>       | <a href="#">17</a> |
| <a href="#">District Convention.....</a>     | <a href="#">18</a> |
| <a href="#">Coronado Rose Show.....</a>      | <a href="#">20</a> |
| <a href="#">Rose Garden Corps.....</a>       | <a href="#">20</a> |
| <a href="#">Iceberg Roses.....</a>           | <a href="#">21</a> |
| <a href="#">Thoughts and Prayers.....</a>    | <a href="#">23</a> |
| <a href="#">John Lester Memorial.....</a>    | <a href="#">23</a> |
| <a href="#">Bob Martin Poem.....</a>         | <a href="#">24</a> |
| <a href="#">Gardening Events.....</a>        | <a href="#">25</a> |
| <a href="#">Calendar/Websites.....</a>       | <a href="#">26</a> |
| <a href="#">Consulting Rosarians.....</a>    | <a href="#">27</a> |
| <a href="#">Rose Suppliers/Nurseries....</a> | <a href="#">28</a> |
| <a href="#">Photo Credits.....</a>           | <a href="#">29</a> |

## President's Message

By Deborah Magnuson, [magnusonsd@sbcglobal.net](mailto:magnusonsd@sbcglobal.net)



Spring is here, and as our flowers begin opening no other time is quite like this to put a “spring” back in one’s steps. Energetic new member Courtney Yezzi, presented a yoga stretching demo at our recent meeting and had a roomful of us “springing” out of our chairs following her lead. We learned simple stretching and breathing exercises before and after gardening can refresh us, ease stiffness, and minimize sore muscles. With very little effort really, I for one felt revitalized. I hope you noticed the difference too. Who knew? Special thanks also to John Bagnasco, a true rose rustler. He captivated us with a fascinating look into so many rare roses from the far corners of the earth. His work in propagating specimens no longer readily available in commerce, often donating these treasures to the California Coastal Rose Society special fundraising auctions, inspired us. Fortunately, he’ll be back with us again soon for our 94<sup>th</sup> annual Rose Show and Auction that is right around the corner. I also want to mention my appreciation to Tom Cooney for his educational presentation at our February meeting. His many photos identifying pest damage and disease will go a long way in helping us remember what to be on the lookout for in the quest to keep our rose gardens looking their very best in the coming months. I am so proud of the talented speakers and experts we bring before you every month, and know you all are too.

The first day of spring this year brought a most precious gift from mother nature to San Diego rose gardens. That gift was water, in the form of showers that fell overnight. Fortunately, my rain barrels were filled once again. We all know too well that every drop counts in keeping our roses happy. I also cut my first flower bouquet of the season for display on my dining table in an attempt to preserve the more fully opened flowers from the ravages of the winds in the early morning hours. They are pictured here and include ‘Firefighter’, ‘Ring of Fire’, ‘Neil Diamond’, ‘Blue Girl’, ‘Sparkle & Shine’, an iris, and a couple stems of my newly opening, and beloved fragrant sweet peas...or a “non-rose” as Bob Martin often quipped. As winter fades away, walking through our rose garden helps us appreciate the generation of new life as we observe our beautiful new blooms gently unfold. The beauty of a spring morning invites us to grow and invigorate once again. For those who celebrate Easter later this month the commemoration of the Messiah is a reminder to renew daily hope. Whatever your faith tradition, spring has a way of whispering to us that thoughts and habits no longer serving us really can be left behind. Just as we see our rose gardens transforming before us, the possibility of personal transformation awaits. May you each have a blessed April!



## Hands-On Session: How to Stage Roses for a Rose Show

By Bill Ornelas, SDRS VP, Programs, [bornelas1945@att.net](mailto:bornelas1945@att.net)

This month's meeting is Monday, **April 18, 2022 at 7:00 p.m. in Room 101** of the Casa del Prado in Balboa Park. Our format this month will be a little different. Instead of a featured speaker we will have several stations manned by our experienced, prize-winning rose exhibitors. Each of these **expert rosarians will demonstrate the best practices in staging (preparing) rose blooms for exhibition in a show**. This will be very timely in that our SDRS rose show will be coming up at the end of April. It is rare to have all of the best exhibitors in one room sharing their secrets of how to win at a rose show.

After the experienced exhibitors demonstrate the methods of staging different types and varieties of roses the attendees will then have a chance to stage roses which they have brought from home, under the guidance of the instructors, harvesting all of their best advice. After that all of the roses will be placed on tables labeled with show classes similar to our Little Rose Show. Information on the responsibilities of the show clerks will also be shared. Then our own Linda Clark will demonstrate how judging is performed and prizes are awarded. It is a tremendous opportunity for new exhibitors!

So why do people exhibit roses in a rose show? There are many reasons. But one of the most profound that I ever heard was from our own Bob Martin. He said that if you can enter a high quality rose specimen in a rose show and it is good enough to win prizes, then your practices of growing that rose in your garden are sound. Healthy roses love to produce beautiful roses and they invite the grower to show them off at a show. Another reason for exhibiting roses, as in any competition, is the 'thrill of the win'. Cash prizes, ribbons and certificates are evidence that all of your hard work in fostering a rose has paid off. Participating in a rose show also shows our support of our rose society and it is an opportunity to learn more about roses and to share the knowledge you have with others, including the public. Over all...it is a win-win opportunity!

**So bring your most beautiful and healthy rose stems** in a water container and learn how to enter into the exciting world of rose shows. Even if your specimens are not top quality, you will still learn the methods which are consistent from rose to rose and have a chance to practice. Properties will be available along with an explanation of how to enter different classes. This is a good opportunity to participate in a show that is not intimidating but just great fun!

Here is the schedule of events:

7:00 p.m.—Meeting begins

7:15 p.m.—Rose preparation and instructions for this Little Rose Show including entry tag preparations and discussion of various entry classes available

8:00 p.m.—Instruction on placement and clerking information

8:30 p.m.—Judging of Little Rose show and explanation of procedures to be followed after judging

9:30 p.m.—Wrap up

*Our first Little Rose Show of the year is at this month's meeting! We have a special event this month to show you how to prepare your blooms for exhibiting at rose shows so bring your finest rose blooms and arrangements to the meeting. For roses, let the leaves stay on, bring them in a water container and bring some pruners. Vases, floral foam for stabilizing, tags and rubber bands will be provided.*

***There are prizes to be won!***

There will be NO Silent Auction at this month's meeting.

**Directions to Casa del Prado, Room 101:** The Casa del Prado building is immediately west of the Natural History Museum. Entrances to the Casa del Prado lead to an inner court. The rooms are accessible from the court. Room 101 is downstairs on the east end of the court.

## Lights, Cameras, Action!

Deborah Magnuson, [magnusonsd@sbcglobal.net](mailto:magnusonsd@sbcglobal.net)



Did you happen to notice our March meeting was being videotaped? The good news is new member Jonathan Schwartz has begun offering his IT expertise to capture our meetings and speakers (with their permission) for later posting to our YouTube Channel. I've heard from a number of members with either mobility issues or other difficulties attending night time meetings wishing for this type of service. Many of you in this situation have expressed hope for a chance to hear our great speakers. I am so appreciative of Jon's willingness to step forward and offer his talents in this regard. Our pilot testing this month will be evaluated and from here we will determine how to proceed. Stay tuned!

## Rose Pilgrimage

**Saturday, October 15, 2022**

By Sue Streeper, [streepersue@gmail.com](mailto:streepersue@gmail.com)

Now is the time to reserve your place on this year's pilgrimage to rose sites in southern California. We will be departing at 8:00 a.m. from the far south end of the parking lot at the Veterans Medical Center in Balboa Park (corner of Park Boulevard and Presidents Way). Our San Diego charter bus will take us first to Rose Hills Memorial Park in Whittier where we will tour their gardens of over 600 varieties of roses. From there we will travel to Otto & Sons Nursery in Fillmore where we will have lunch and plenty of time to peruse the thousands of roses they grow. We will have the opportunity to purchase plants and load them onto the bus. We plan to be back in San Diego around 6:00 p.m.

We anticipate that the trip will fill quickly, so you should send in your reservation now. **Deadline for reservations is Sept. 20, 2022.** Make out a check to the San Diego Rose Society for \$75 per person and send to Sue Streeper, 1333 Wenatchee Avenue, El Cajon, CA 92021. We all look forward to a great trip with good friends and lots of roses!



*Rose Hills Memorial Park Rose Garden*



# San Diego Rose Society

## 94th Annual Rose Show

### And Plant Auction



**Saturday, April 30, 2022**  
*Rose show opens at 1:00 or upon completion of judging.*  
*Closing at 5:00.*

**Sunday, May 1, 2022**  
*Rose Show open 10:00 to 3:30.*  
*Silent Auction begins at 10 a.m., Live Auction 2:00 p.m.*

**Ronald Reagan Community Center**  
**195 East Douglas Avenue**  
**City of El Cajon, California 92020**

*The San Diego Rose Society thanks  
All those who generously contribute gifts of  
Effort, Donations or Sponsorship.*

All amateurs are invited to exhibit their roses.

The exhibit hall will be open to the public upon completion of judging,  
estimated to be 1:00 Saturday, and will remain open until 5:00.

Rose Show Chairperson, Linda Clark: [lincline@cox.net](mailto:lincline@cox.net)

Admission is free

### **Welcome Rose Show Exhibitors!**

It takes all of us bringing what we can, in spite of rain, wind, chili thrips and whatever life throws our way! We know it is a concerted effort to contribute to the show and we are grateful.

Properties will be located in our rental truck and on the western patio entrance. They will be ready at **6:00 a.m.** Saturday morning. There you will find a registration sheet, coffee/donuts, tags and the placement tables with many smiling faces we hope! Newer exhibitors will get a welcome goodie bag with tips and sample tags showing information needed on the tag!

Placement time is from **7:00—9:45a.m.** Saturday morning. There should be plenty of properties, and arrangers may work in the show area.

Thanks to all, Linda Clark, Show Chair  
(619) 301-1156 or [lincline@cox.net](mailto:lincline@cox.net)



## Your Help is needed to make the Annual SDRS Rose Show a success!

Please plan to include the show and **volunteering** in your weekend plans

**Friday, April 29 – Sunday, May 1**

This year's venue:

**The Ronald Reagan Community Center, 195 E Douglas Ave, El Cajon, CA 92020**

Putting on the show, which will include an auction again this year, is always great fun, but it takes many hands! Whether or not you are planning to exhibit roses from your garden, and especially if you haven't had a chance to attend a rose show before, please consider finding a volunteer task or two that works for you!

Here are some of the opportunities to participate, what's involved, and our current guesstimate of when team members are needed:

|                                |   |   |
|--------------------------------|---|---|
| <b>Show Setup/Breakdown</b>    |   |   |
|                                | Setting up Tables and Equipment   | Friday 2:00pm – 4:00 pm   |
|                                | Post-event Cleanup  | Sunday 3:30pm – 5:30 pm   |
| <b>Reception Table</b>         |   |   |
|                                | Welcome rose show attendees<br>Assign and record auction numbers<br>Collect and record payments including from auction proceeds and donations<br>Answer questions from rose society members and the general public<br>Sign up new members | 2-3 hour shifts<br>Saturday 10:00am – 5:00pm<br>Sunday 9:30am – 3:30pm            |
| <b>Entry Placement</b>         |   |   |
|                                | Greet rose exhibitors and answer questions<br>Run entries prepared by exhibitors to the show area<br>Find place entries in the appropriate display area in alphabetical order   | Saturday 6:00am – 8:00am<br>8:00am – 10:00am                                      |
| <b>Clerks</b>                  |   |   |
|                                | Shadow judges, attach award stickers to entry tags, and help as a go-fer and notetaker. Budding exhibitors will learn much for future shows by listening to the judges assess the entries!  | Saturday 10:00am – 1:00pm   |
| <b>Refreshments</b>            |   |   |
|                                | Donuts & Coffee Service<br>Judges & Volunteers Lunch Service  | Saturday 6:00am – 10:00am<br>Saturday 11:30am – 2:00pm<br>Sunday 9:00am – 11:00am |
| <b>Water Blooms on Exhibit</b> |   | 2-3 hour shifts<br>Saturday 10:00am – 4:00pm                                      |
| <b>Sale of Excess Blooms</b>   |   | Saturday 1:00pm – 3:00pm  |

Contact Natalie Stout, [nstout92116@gmail.com](mailto:nstout92116@gmail.com) or 619-200-3895, to sign up or ask any questions you may have.

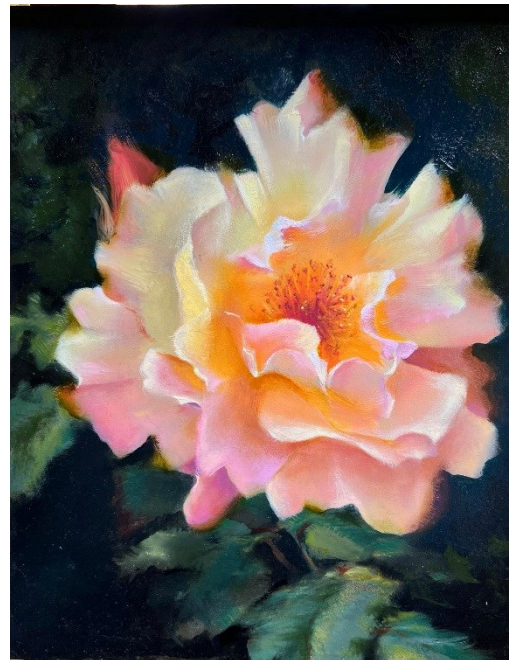
## An Artist Among Us

By Elaine Ornelas, [cornelas1949@att.net](mailto:cornelas1949@att.net)

At a recent planning committee meeting for our SDRS Rose Show and CCRS Auction, one of our newer members, Dawn Harrison, announced that she would like to donate one of her original paintings for our auction. It was such a generous offer and we immediately expressed interest. I asked Dawn to send me some of her biographical information and a few photos of her paintings.

Dawn was born and raised in California and has lived in San Diego since 1980. She loves gardening and also loves the long growing season here. She grows a colorful array of flowering perennials, fruit trees and fragrant roses. She began her art practice 25 years ago. She says “Capturing the beauty of the dazzling wonderland that surrounds me is my purpose and therefore my gift to others. Using my artistic voice to translate the language of the allure, mood and mystery of the natural world, is what inspires me.”

Here are some photos of her body of work.....beautiful, gentle images of our favorite flower. She is in the process of deciding which painting she will be submitting for our auction. We hope all of you come and bid on her masterpiece! Many thanks to Dawn for her profound generosity.



## Opening Our Gardens!

By Elaine Ornelas, [cornelas1949@att.net](mailto:cornelas1949@att.net)

It's that time again! It is the time when many of our members open their gardens so that visitors can wander among their roses and other plants. It is one of our most popular events of the year. We hope that all of you can visit one or all of these open gardens and chat with the owners, gathering hints on how best to grow roses. Enjoy!

### **Deborah Magnuson Clairemont/Bay Park**

Our open garden will be on **Saturday, April 16, from 10 a.m. to 4 p.m.** Our address is **3739 Ticonderoga St, San Diego, CA 92117**. Situated on a canyon with a view to the Pacific Ocean that overlooks Mission Bay the garden contains over 100 roses including climbers, shrubs, hybrid teas, floribundas, and mini roses, many of which are located on a terraced hillside. The garden's perimeter is surrounded by various fruit trees including apricot, plum, citrus, fig, avocado, and apple. Monarch Waystation certification is in place so there is milkweed and nectar plants throughout to support annual reproduction and migration of endangered monarchs. A vermicomposting bin will be displayed along with instructions.

### **Bill and Elaine Ornelas Clairemont/Bay Park**

We are opening our gardens on **Saturday, April 16, from 10 a.m. until 4 p.m.** We are happy to have you tour our eclectic garden consisting of over 150 roses including climbers, hybrid teas, floribundas, shrubs, miniatures, a citrus orchard, vegetable garden and a plethora of rare and unusual plants and trees...even a large, producing macadamia tree. Our address is **3005 Lackawanna Way, San Diego, CA 92117**. Come and enjoy!

### **Jim Price and Joan Sieber Talmadge**

We welcome you to come to our open garden event this year on **April 16th from 10 a.m. to 2 p.m.** We have about 50 rose plants but we have many other plants and flowers to enjoy. Plus we have a '1950's museum' that some may find interesting. Our address is **4953 Lorraine Drive, San Diego, CA 92115** in Talmadge.

### **Linda Clark La Mesa**

This year we are opening our garden on **April 16th from 1 p.m. to 4 p.m.** A little change this year..... since there are so many open gardens on this date, I would like to encourage those of you who have visited my garden in the past to see the other gardens. I look forward to "talking roses" with many of our newer members, but of course everyone is welcome! We have over 800 roses, fruit trees, various flowering plants and even chickens! Our address is **10656 Fuerte Drive, La Mesa, CA 92941**.

### **Mark and Virginia West Rancho Penasquitos**

We hope you can come and enjoy our open garden on **April 24 from 11 a.m. to 4 p.m.** with refreshments available. We are located at **9262 Samantha Court, San Diego, CA 92129** in **Rancho Penasquitos** area of San Diego. Even though we are on a cul de sac, our home is on a corner and there is ample parking very nearby. We have about 175 rose plants in all including trees, climbers, HTs, floribundas, a few shrubs and minis. We have an arbor entrance to what we call our secret back yard. A project to remove protruding tree roots, replace the back lawn and add some artificial turf on one side near the Ficus tree was just finished. As a result, the back yard walkable space has been extended (and less of a trip hazard). Since last year's Open Rose Garden, we also added a substantial fountain to the hill behind the backyard retaining wall. These features enhance the roses in the backyard.

*continued on page 8*



**Sue Streeper  
El Cajon**

You are invited to visit Sue Streeper's garden on **Saturday, May 7, from 9 a.m. to 5 p.m.** The yard features about 200 roses including climbers, miniatures, hybrid teas, and floribundas. The address is **1333 Wenatchee Avenue, El Cajon CA 92021**. Wenatchee is off Pepper Drive, in the general vicinity of Gillespie Field. Please come and enjoy a beautiful day among the roses!

**Rita Perwich  
Coronado**

Please come and visit my garden on **Saturday, May 7, 2022 from 10 a.m. to 2 p.m.** My roses would like to meet you. My address is **416 Tenth Street, Coronado, CA 92118**. I have very close to 150 roses (so much for deciding to limit myself to 100 roses about 5 years ago!) I grow quite a few roses outside the garden fence with companion plants. I grow milkweed there too and had a lot of monarch activity last year. Inside the garden, I grow hybrid teas, floribundas, shrub roses, David Austin roses, polyanthas, a few minifloras and miniatures, and I do have a few old garden roses....so a little bit of everything. I also grow quite a few fruit trees. This year my greatest challenge in my completely spray-free garden is my 9 month old puppy, Teddy.

**Robert and Kristine Russell  
Crest**

We will be hosting an Open Garden on the Saturday before Mother's Day, **May 7, from 1 p.m. to 4 p.m.** We have over 200 roses in our garden and we will serve light refreshments. Please come and enjoy the day and meander along our walkways among the roses. Bring your Mom! Our address is **421 North Lane, El Cajon, CA 92021**.

**Ruth Tiffany  
San Carlos**

I would love to invite all members and friends of the San Diego Rose Society to my open garden on **Saturday and Sunday May 14 and 15, from 9 a.m. until 6 p.m.**. This year my open garden will be a tribute to 4 wonderful rosarians who are no longer growing roses here on this earth. Roger English was a friend and mentor who never had an unkind word to say to anyone. Roger loved to grow and exhibit roses but most of all he loved to share information. He was a very good researcher about roses, growing conditions, soil, amendments and the best ways to care for roses. John Lester was a San Diego County Fair buddy and a very fine rose exhibitor. John was an exacting groomer of exhibition roses and he and Barbara were always coming up with top awards from any show they entered. I remember so clearly John's joy in sharing the beauty of the roses in his garden and he grew those roses so very well. Dick Streeper hybridized several roses, of which I have had several in my garden. I appreciate so many rose-related articles and presentations he shared in his long career as the premier "rose man" of San Diego. Dick's feeding programs greatly influenced how I care for my roses and his example of teaching with simplicity and well researched information was a huge gift to the rose-growing world. Bob Martin was my dear friend and I loved him. Bob hybridized some really beautiful roses, of which I have the joy of having several. He would always and happily give detailed and accurate information about an astoundingly large number of rose subjects. His rose knowledge base was encyclopedic, yet he could explain the information in a way even a novice rose grower could grasp. While serving as vice president and then president of the American Rose Society, Bob still gave so much of his time and talent to our local and neighboring societies because he so strongly believed we were (are) the future of roses in this world.



When I walk my garden I think these wonderful friends walk along side of me, continue to mentor me, and surely smell the fragrance and bask in the beauty of the roses. Come and enjoy the garden, the sunshine and some chocolate chip cookies.

**ROSEHILL GARDEN BY RUTH TIFFANY  
6705 MAURY DR, SAN DIEGO 92119**

(FWY 8 E. TO 125 N. EXIT NAVAJO RD, LEFT AT STOPLIGHT, TO 3<sup>RD</sup> STOPLIGHT –BISBY LAKE-TURN RT, UP 3 BLOCKS, CORNER BISBY LAKE & MAURY DR.)

*continued on page 9*



### Beth Van Boxtel Encinitas

I hope you will be able to come to my open garden event on **Sunday, May 15 from 1 p.m. to 4 p.m.** My garden is full of 140 rare, unique and fragrant roses and I will be serving tacos from Tocaya Organica from 1 p.m until 2 p.m. Come and enjoy!



### Taking the Mystery Out of Rose Arranging

By Frank Brines, [roseguy2000@aol.com](mailto:roseguy2000@aol.com)

Along with many horticultural specimens, every rose show also features at least a handful of rose arrangements. Why so few arrangements? Certainly, one can quickly enter dozens of horticulture specimens in the time it might take to create a single arrangement. In addition, many exhibitors lack confidence in their creativity, their knowledge of the mechanics, or may just feel intimidated by rules that may seem a bit mysterious. But the San Diego Rose Society would like to change that!

To that end, Kristine Russell and Frank Brines led a workshop for members interested in exploring rose arranging. It was great fun! Kristine shared a wealth of insights and practical tips based on her years of experience with modern/abstract styles. Those included how and where to discover unusual or alternative containers and materials to give your arrangements an element of surprise and delight. Frank presented many examples of traditional arrangements and demonstrated construction techniques. As pre-work the participants were asked to create a silk rose arrangement and bring it to the workshop. Kristine and Frank gave them helpful feedback and encouragement. They finished off the workshop by creating arrangements with the real roses supplied courtesy of the rose society; the remaining roses were sent home with the participants. Frank and Kristine are hoping to see entries from the participants at the rose show on April 30<sup>th</sup>.



*Upper left: Attendees of the arrangement workshop*

*Left: Frank demonstrates arrangement to Marcia Giles.*

*Right: Kristine demonstrates abstract arrangement techniques.*



*continued on page 10*



*Abstract arrangement*



*Traditional arrangement*

## Quotes from a 'Telling' Book About Rose Exhibitors

By Elaine Ornelas, [ornelas1949@att.net](mailto:ornelas1949@att.net)

I have been reading a book that was written in 2007 detailing the funny and interesting accounts of people who become caught up in our wonderful world of exhibiting roses at rose shows. I thought I might print here some quotes from that book. Enjoy!

### *Otherwise Normal People Inside the Thorny World of Competitive Rose Gardening*

By Aurelia C. Scott

'I nodded as one seemingly rational person after another explained how their collection of three or five or nine roses had grown to three hundred, six hundred, even one thousand plants.'

'Twice a year, the most competitive rose people cut the prettiest blossoms off their best plants, take them to a national convention, and groom them for seven hours in order to contend for the highest honor.'

'American's roseaholics own more pruners, snippers, short sharp knives and long leather gloves than most people. And, just like Clarence, they squish Japanese beetles between their fingers for the sheer pleasure of killing the enemy.'

'Geri and Alan McCarron met at a racetrack, and they own several racehorses in partnership with friends. Geri says that (her horse) Samwise loves roses as much as they do. He demonstrates his passion by eating any roses he gets close to, thorns and all. In addition to his drastic pruning method, he provides manure for the alfalfa tea that Geri pours over the plants. "It's the best rose potion ever, bar none."

'While they wait (for judging to be completed), most exhibitors eat breakfast. In San Diego a large group took over half the booths and tables in a Mexican restaurant for huevos rancheros and pancakes.'

'When the doors swung open, so many people surged toward the three-tiered trophy table that most couldn't get near it.'

## What To Do In the Rose Garden in April Advice From Our Consulting Rosarians

### *Amazing April*

**Christine and Rand Allan**  
Residence: Mt. Soledad, CA

April is an exciting month for rose growers as this is when you get that splash of first bloom of the season color in your rose garden. It is glorious to behold, and each day there's more and more. This is also the time, while you're enjoying the new color, to patrol for pests and any other problems in order to get on top of it before it becomes a major problem. This month, you'll want to pay particular attention to your roses to start evaluating bloom development as we get near the date for the annual San Diego Rose Society Rose Show at the end of April. At the April 18<sup>th</sup> monthly meeting, the program will be on how to prepare, stage and exhibit roses, so you will have an opportunity to learn these valuable techniques from the experts which you can apply when exhibiting your roses. Linda Clark will also be sharing a judge's perspective when evaluating/judging exhibited roses. Also, April is the month when some of our members hold open gardens at their homes. Please take advantage of these opportunities as there is always something new to learn about roses, and at the same time enjoy their beauty and company of other rose lovers.

Now, on to rose care for April. During the month of April we continue to follow our fertilizing schedule of feeding every two weeks and will do so through the month of June. We start with sprinkling 1 cup of Biostart around the base of each rose. Make sure the ground is moist before applying the Biostart and the rest of the fertilizer recipe.

We dissolve the following in a two-gallon bucket of water:

- ◆ 1/4 cup Magnum Grow
- ◆ 1 tablespoon of Humic Acid
- ◆ 2 tablespoons of Better than Fish
- ◆ 2 tablespoons of Seaweed Extract
- ◆ 1/2 teaspoon of Iron Chelate
- ◆ a couple drops of Jump Start.

Each bush receives its own two-gallon bucket of this fertilizer concoction.

We have a drip watering system and run ten-minute watering cycles three times a week. With the limited rainfall we've had this year, it is important to maintain a consistent watering schedule for our roses and adjust it accordingly as temperatures vary. Also, keeping the mulch supply in the garden at optimal level is key for adequate moisture retention. We are fortunate in Southern California to have the right kind of weather lengthening our rose growing season, so care for your roses by feeding them regularly, and they will reward you in return with beautiful blooms and healthy growth.

One of the first roses Bob Martin hybridized was 'Margie' (registered as MARMie) which was named for his mother. We were fortunate to be the top bidders on this rose, which is a climber, at last year's rose auction. It has not disappointed, and was one of the first roses to bloom this year for us. Here is a photo.

*'Margie'*



*continued on page 12*



**From Robert and Kristine Russell**

Residence: Crest, CA

Good morning after the rain! What a nice rain we just had and it was very refreshing. Hopefully you all were able to get your 'bucket' feeding in before the rain. Sunday afternoon was definitely a scramble to get all the roses fertilized. During the month of March we were very busy in the garden, planting the final plants and diligently working on the spray routine. We walked through the garden and started to disbud the hybrid teas to have single blooms. We also started to stake and tie some of the larger stems that will hopefully help keep them standing straight and tall. Remember to walk your gardens daily, keeping an eye out for any pests or diseases. I have already had one bush become infested with spider mites in one day ...just overnight it seems.

The EZ Flow fertilizer system is doing its job fertilizing a little bit of liquid fertilizer every time the roses are watered on the automatic timers. We have definitely had some interesting weather during this late winter/early spring, as the first day of spring was almost 90 degrees out here in Crest. We had lots of hot days, then cool days, then rain and sunshine, which seemed to have an effect on the growth of our roses. We have seen several early blooms. Hopefully our gardens will be able to hold out until the upcoming rose shows in L.A. and of course, our own SDRS show at the end of April in El Cajon. We are looking forward to helping as many of the new members at our April 18<sup>th</sup> meeting with our Little Rose Show to prepare for the upcoming shows.



*'Elizabeth Taylor'*

*'The Impressionist'*

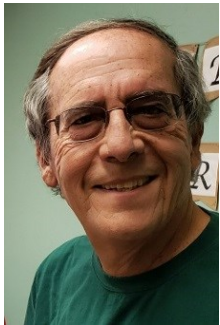


*continued on page 13*



## A Sanctuary

**Bill and Elaine Ornelas**  
Residence: Clairemont/Bay Park



Sometimes I wonder if we really give our rose gardens the appreciation they deserve. Maybe we just assume that they will always give us their beauty every year, not realizing what a treasure they truly are for us. With all of the world events, the COVID-19 pandemic and some recent medical issues for Bill and me, I have gained an enormous sense of appreciation for our garden which has become a true sanctuary for us. Together, each morning, we walk through the garden, looking at the lady beetles happily munching on the aphids, wondering at the potential of some blooms which might be prize-winners at the upcoming shows, amazed at how the ‘naked sticks’ we just saw after pruning are now flush with foliage and buds, pregnant with beauty. We have a sense of anticipation....grateful as they respond to the care we offer them. It is such a joy!

April is a month of bounty for roses.....in growth, in blooms and unfortunately, sometimes in pests and diseases. We must remain vigilant and manage these problems



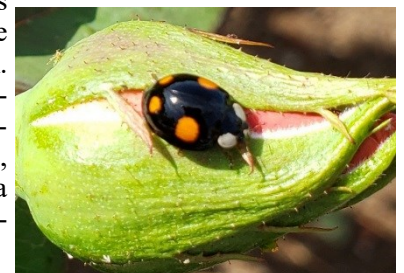
*Water wand*

early in their development. For us, the last week of March was prime for our little **aphid** friends, which began appearing in great numbers on the new growth and blooms of our roses. Aphids can reproduce at a phenomenal rate. In fact they are ‘born pregnant’, and are able to reproduce asexually, not requiring a male to fertilize the females’ eggs in many cases. You can see from our photo (at right) of adult and infant aphids on one of our roses. Some time ago Bob Martin recommended a water wand to us (pictured at left) which emits a strong spray of water when connected to a hose and we obtained one at our 2018 ARS Convention here in San Diego. It proved very useful in blasting off the aphids, particularly those which were hiding under the leaves and on buds. It uses little water. Unfortunately since aphids reproduce so readily it requires this water blasting fairly frequently. We also use the



*Aphids and their young*

‘squish’ method.....squeezing them between our fingers on the buds and new growth. You can also ‘flick’ them off with your fingers. We are starting to see more lady beetles in our garden as they realize that one of their main food sources, aphids, are available in abundance. Although we do not use any insecticides for management of aphids, insecticidal soaps can be used early in the morning. Insecticides should be used as a ‘last straw’ method for controlling aphids, since many of them will kill beneficial insects that may control aphids and other pests as well.



*Unusual color of a lady beetle*

April is also a time when we must be on the lookout for **fungal diseases** like powdery mildew, rust and blackspot, as the weather warms and we may still have some rain activity. For our garden, we rotate the use of organic fungicide Serenade and Actinovate, spraying at about 2 week intervals.

**Fertilizing** roses is a topic of discussion among rose growers that is a highly-contested topic. Some of us have very complex fertilizing formulas and timetables, encouraging growth and blooms that will place well on the exhibition table. Others of us have a more moderate approach, wanting the best out of our roses but not wanting to have the fertilizing effort consume too much time. And still others just want to buy an all-purpose rose fertilizer which is easy to apply with good results. There is nothing wrong with any of these approaches. It is important to match the desired outcome with the effort needed. In our garden we use fertilizer products obtained at our annual SDRS fertilizer sale coordinated by Ruth Tiffany. We find they work well to produce abundant blooms and healthy plant growth. So here is our ‘magic formula’. We add all 8 of these ingredients to our 50 gallon rain barrels and use a sump pump to deliver the appropriate amount to our large and small rose plants every 2-3 weeks. We calibrate the rate of delivery from the sump pump to deliver 1 gallon to large plants and 1/2 gallon to the smaller ones.

- 3 cups Magnum Grow
- 3 cups fish emulsion
- 3 cups seaweed extract
- 1 cup Epsom salts
- 1/2 cup Bio-Coenzyme
- 1/2 cup Jumpstart
- 1/2 cup humic acid
- 2 tablespoons iron chelate

*continued on page 14*



*(Rose Care, continued from page 13)*

Above all, the most important ‘task’ we all have as rosarians, is to enjoy our roses, to walk among them, grateful that we have been given these blessings of grace and beauty. Here are a few of the blooms from our garden this spring. Enjoy!



*Clockwise from upper left:*

*‘Sexy Remy’*

*‘Fourth of July’*

*‘Tropical Lightning’*

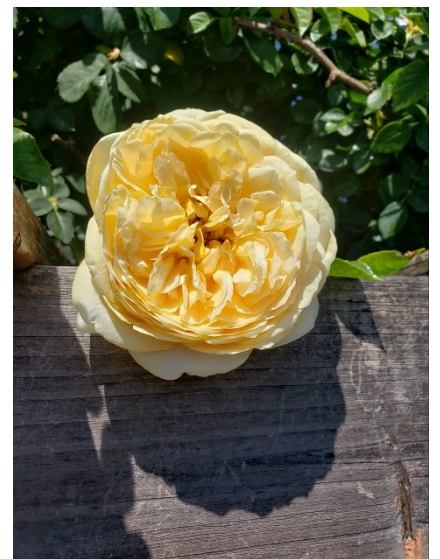
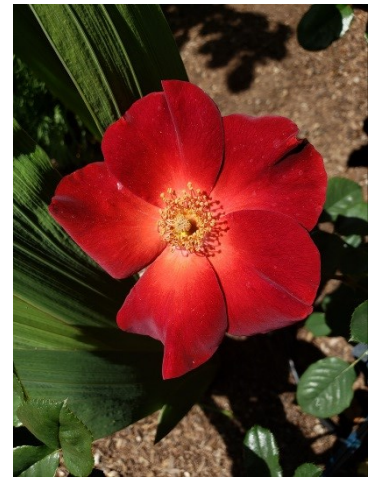
*‘Paul Ecke, Jr’*

*‘Teasing Georgia’*

*‘Munstead Wood’*

*‘Gertrude Jekyll’*

*‘Alakazam’*





## Problem Beetles Ahead: Mark Your Calendars

By Rita Perwich, Master Gardener and Consulting Rosarian [ritaperwich@gmail.com](mailto:ritaperwich@gmail.com)

Pest damage on our beautiful rose blooms rankles deeply but motivates us to take the appropriate actions to put the culprits to rest. There are two pest beetles that are annual “regulars” in our San Diego rose gardens. Mark your calendars: expect hoplia beetles to make their unwelcome entrance in the spring and fig beetles to crash your garden in the summer. Pests are never welcome, but when we expect them and know when they are coming, we can minimize their damage.

Every pest leaves a signature symptom. Regularly monitor for symptoms and you will find the culprit before too much damage is done.



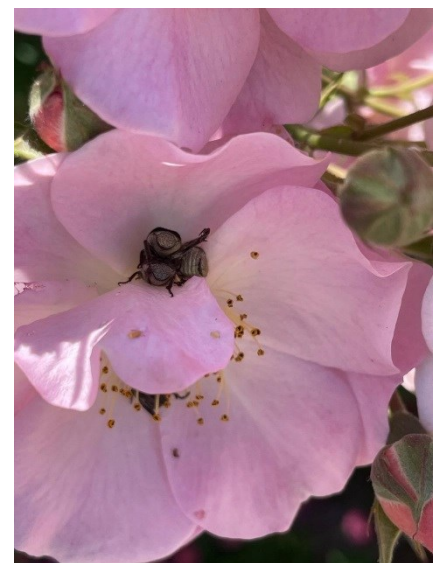
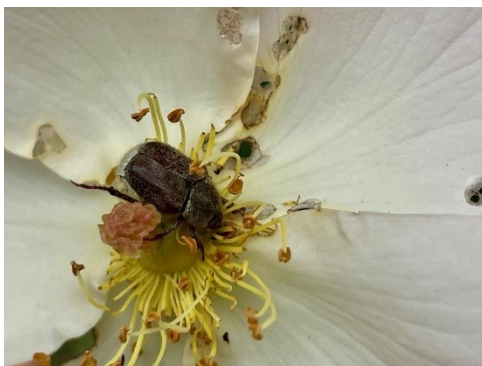
### Know the Enemy:

#### The Hoplia Beetle

Chewed up petals and holes in our rose blooms lead us to suspect that either hoplia beetles or caterpillars are at work. If the blooms damaged are mostly our light-colored roses, the whites, yellows and pinks, and it is early spring, there is a good chance that the pests we are dealing with are hoplia beetles. There is mercifully only a single generation of these beetles each year.

The hoplia beetle (*Hoplia callipyge*, family *Scarabaeidae*) measures about one-quarter inch long. It is mostly brown with a darker head and thorax. The adult is brownish-gray with brown wing covers and a very slightly iridescent silvery underbody. Female beetles lay glossy white eggs in the soil. The whitish larvae are C-shaped with a bulbous posterior. They feed on decaying vegetation and plant roots but do not feed on roses' roots. They develop slowly, remaining in the larval or pupal stage throughout the winter. In early spring, when the environmental conditions are right, the adult beetles emerge from the soil and fly to gardens where they feed on roses and other flowers. They do not feed on leaves, just our beautiful buds and blooms. After feeding for several weeks, they fly back to their egg-laying sites. In San Diego, hoplia beetles' onslaught on our roses has a short time-span lasting only from late March to early May. But be prepared for an army of beetles. Last year, in mid-April, I counted and disposed of around fifty beetles each day in my rose garden. In the first week of May, there were only a few stragglers. Happily, by mid-May, the hoplia beetles were gone for the year.

*Hoplia Beetles: There is a good chance that chewed up petals and holes especially on light-colored roses in the early spring is the handiwork of hoplia beetles. There is mercifully only a single generation of these beetles each year.*



*continued on page 16*

### **The Fig Beetle (also known as Green Fruit Beetles)**

In the summer, metallic iridescent green fig beetles loudly announce their arrival with buzzing sounds. They zoom into our gardens to feast on our ripe peaches, figs, apples and roses. Fig beetle (*Cotinis mutabilis*, family *Scarabaeidae*) adults are large metallic green beetles that measure up to one to one and one-third inches long. Their habitat is the southwestern United States and Mexico. They have prominent legs and antennae. Some people mistakenly think they are Japanese beetles or June beetles which are pests found in the eastern United States. Fig beetles mate and the female lays oval white eggs in the soil just beneath organic matter. The eggs hatch in a week. During spring, larvae mature and pupate in a cell of soil particles. The larval stage is the longest period of their life cycle. The adults are a menace from late June through to the early fall, actively feeding during the day on soft-skinned ripe fruits such as peaches, apricots, plums, figs and apples. (<http://ipm.ucanr.edu>) Their gourmet tastes also include rose petals. Again, there is fortunately only a single generation of these beetles each year.



**Fig Beetles:** In the summer, metallic iridescent green fig beetles loudly announce their arrival with buzzing sounds. They zoom into our garden to feast on our ripe peaches, figs apples and roses. Insecticides are not necessary. Crush them underfoot, clip them in half with your pruners or use the soapy bucket method.



### **Take Back Control**

Throughout the years I have dealt with both these beetles, I have learned that I have three advantages in capturing these beetles:

- 1) Both hoplia and fig beetles are easy to spot: the hoplias because of the contrast of their dull brown-gray color against the light-colored roses, and the fig beetles because of their bright metallic-green color
- 2) Both varieties of beetles get very focused on feeding so they don't see me coming to get them
- 3) Neither variety bites.

### **Disposal Methods**

**Hoplias:** Catch the hoplia beetle between your fingers. You can crush it underfoot, squish it between two petals, clip it in half with your pruners or use the soapy bucket method. When the hoplia beetles are not feasting on my roses, I have found them within my calla lilies. They do slightly chew up the lilies but the lilies' main function appears to be a deep comfortable funnel for the beetles to repose for afternoon and evening naps. It is imperative to check rose blooms and the inside of calla lilies twice daily in the morning and at dusk.

**Fig beetles:** close your hand over the beetles. Crush them underfoot, clip them in half with your pruners or use the soapy bucket method.

**The Soapy Bucket Method:** Add a few drops of detergent soap to a bucket half filled with water. Drop the beetles into the bucket. When you discover a multitude of fig beetles clustered on one piece of fruit or on one rose bloom, cut off the entire fruit or bloom and shake the beetles off into the water. Once in the soapy water bath, the beetles are captive. They cannot get out.

Insecticides are unnecessary, of little value against these pests and are not recommended. With fig beetles, remove soft, ripe and mushy damaged fruit from the trees and from the ground to prevent these pests being attracted to your garden.

We are often advised to cultivate the habit of being grateful and giving thanks continuously. In our San Diego rose gardens, we can and should be grateful that we do not have Japanese beetles. We can and should give thanks continuously for all the beneficial beetles in our garden: the soldier beetles, the ground beetles, the rove beetles and most especially, for our very pretty friends, the lady beetles.

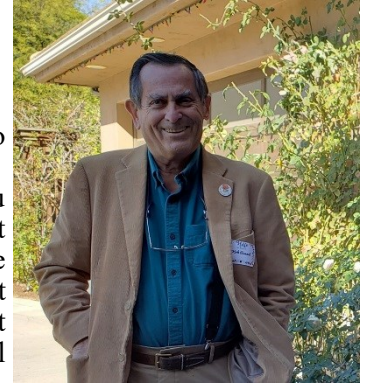


## Membership News for April 2022

By Kirk Rummel, Membership Chair, [knrummel@sbcglobal.net](mailto:knrummel@sbcglobal.net)

With this April issue of the *Rose Ramblings* we have dropped those folks who did not renew their membership for 2022 from the distribution. Boo...

So, if you are reading this from the edition on our website and just realized you forgot to renew (despite my frequent protestations), please renew. If none of your data has changed you don't need to fill out the application. Just donate the amount through PayPal and note that it is for renewal.



Consider this.....we have a busy year planned and you need to rejoin to share in the fun. We had over 70 people at the March meeting (pictured at left) and things are going to be just as exciting from here on forward.

I also want to remind everyone that there are a ton of volunteer opportunities for you to choose from. That's when we can really get to know each other. Many of these are short term tasks like setting up properties for the rose show and others are longer term. Either way, we need each other to chip in.

And now, we welcome our new members for March below.

Watch for the little rose decal on their nametag at the meetings. It means they are new members and say hello.

|                          |
|--------------------------|
| Sal & Ivette Castellitto |
| Daniel Allevato          |
| Ginny Priest             |
| Charles Reiter           |
| Roderick Shade           |
| Miranda & James Lee      |
| Janet Marseilles         |
| Denyse Russell           |
| Mary Jo Wortman          |
| Renee Irving             |



**There are so many good reasons to join or rejoin our rose society. Among the most important is learning the best methods of growing great roses!**

The membership form can be completed and payment submitted using this online link:

<https://www.sandiegorosociety.com/join>

## **67th Annual Pacific Southwest District Convention & Rose Show Hosted by Pacific Rose Society on April 22, 23 & 24, 2022**

Pacific Rose Society will be hosting the 2022 Pacific Southwest District Convention, and all rose enthusiasts across the District are invited to attend this premier rose event. Headquartered at the newly remodeled Courtyard by Marriott in Monrovia, convention goers will have the opportunity to wine and dine along restaurant row on Huntington Drive, shop at Armstrong Garden Centers (across the street), tour the lovely Arboretum and Botanical Gardens in Arcadia, along with visiting with rose friends from around the district. The convention features a fabulous rose show at the Los Angeles County Arboretum on Saturday, an Awards Banquet on Saturday evening, and a district meeting/breakfast on Sunday morning and a Judging Seminar immediately thereafter.

**Registration Required – \$60 per person.** Basic registration covers entrance to the rose show, judging, exhibiting, and meetings for Arrangement Judges and Consulting Rosarians. There are additional costs for the Welcoming Party (\$15), Judges' Luncheon (\$25), Awards Banquet (\$60) & District Breakfast (\$25) and Horticultural Judges Seminar (\$35—lunch included). All events will be priced separately on the registration form.

### ***FRIDAY EVENING, APRIL 22, 2022:***

**Registration opens** at 2 p.m. at the Marriott Hotel

**Welcoming/Cocktail Party** (\$15) 5:30 p.m.—7:30 p.m. (cheese, crackers & crudites) Dressy casual.

### ***SATURDAY, APRIL 23, 2022:***

Registration opens for Exhibitors at 6:00 a.m. at the Arboretum.

**The Rose Show** – Always the highlight of any PSWD convention, the Rose Show on Saturday, April 23rd will be presented at Ayres Hall at the Los Angeles County Arboretum in Arcadia. The Pacific Rose Society's annual show is always a superior event with a huge show schedule and it is coupled with the numerous District Challenge Classes. Also featured at this show will be an expanded Arrangement section plus a Photography division. **All exhibitors and judges must be registered for the convention.**

**Entries will be received from 7:00 a.m. to 10:00 a.m.**

Show opens to the public at 1:00 p.m.

**President's Council Meeting @ Arboretum at 3 p.m.**

**Cocktail Hour—No Host Bar @ Marriott Hotel 5 p.m.**

**Awards Banquet 6:00 p.m. \$60 Marriott Hotel features a sumptuous buffet of beef, fish, chicken, pasta, potatoes, salad and dessert.**

### ***SUNDAY, APRIL 24, 2022:***

**Annual District Meeting & Breakfast - \$25 per person**

Arrangement Judges Meeting at 9:00 a.m.

Consulting Rosarian Meeting at 9:30 a.m.

Horticultural Judges' Seminar from 10:30 a.m.—3 p.m. (lunch included)

Rose Show at Arboretum closes at 3:00 p.m.

**Headquarters Hotel** – Please make your hotel reservations directly with the Courtyard by Marriott located at 700 W Huntington Drive, Monrovia CA 91016 at (626) 357-5211. Ongoing updated information will be available shortly on the Pacific Rose Society website located at [www.pacificrosesociety.org](http://www.pacificrosesociety.org). Convention room rate is **\$149 per night**. Be sure to book early to guarantee your room.

# Pacific Southwest District Rose Convention Friday, Saturday and Sunday April 22, 23 and 24, 2022

## CONVENTION HEADQUARTERS

Courtyard by Marriott  
700 W. Huntington Drive, Monrovia

## REGISTRATION FORM

PLEASE USE ONE FORM FOR EACH REGISTRANT

PLEASE PRINT LEGIBLY

MAKE CHECKS PAYABLE TO 'PACIFIC ROSE SOCIETY'

MAIL CHECKS DIRECTLY TO

EVA HUGHES 15 COSTA

TROPICAL DR.

HENDERSON, NV 89011

Name \_\_\_\_\_ Phone \_\_\_\_\_

Address \_\_\_\_\_ Rose Society \_\_\_\_\_

City \_\_\_\_\_ State \_\_\_\_\_ Zip \_\_\_\_\_

Email Address \_\_\_\_\_

Registration Fee - 60.00 \_\_\_\_\_ All participants must register

Friday Night Welcoming Party — 15.00 \_\_\_\_\_

Judge's Luncheon \_\_\_\_\_ 25.00 \_\_\_\_\_ Luncheon will be held at the arboretum

Awards Banquet \_\_\_\_\_ 60.00 \_\_\_\_\_ Sumptuous buffet including beef, chicken,  
fish, Pasta plus potatoes, salad and desert.

District Breakfast \_\_\_\_\_ 25.00 \_\_\_\_\_ Breakfast buffet

Horticultural Judge's  
Seminar (Lunch included) 35.00 \_\_\_\_\_

Total Enclosed \_\_\_\_\_

## Coronado Flower Show 2022

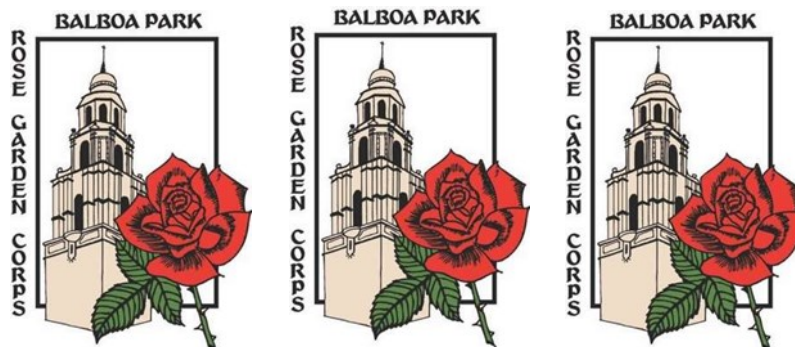
By Rita Perwich, Master Gardener and Consulting Rosarian [ritaperwich@gmail.com](mailto:ritaperwich@gmail.com)



Coronado's first Flower Show was held in April 1922. On **April 23rd and 24th** Coronado celebrates the 100th year of this wonderful tradition. The show is held in **Spreckels Park, 601 Orange Avenue**. Hours for rose entries are on Friday, April 22 from 4 p.m. to 6 p.m., and Saturday from 6:30 a.m. through 9:30 a.m. No entries will be accepted after 9:30 a.m. on Saturday. Entry cards and containers will be provided and exhibitors must complete both the top and bottom of the entry card. The full Schedule of Rules and Classes is available on-line at [www.coronadoflowershow.com](http://www.coronadoflowershow.com). Contact Rita Perwich for any questions at [ritaperwich@gmail.com](mailto:ritaperwich@gmail.com). Consulting Rosarian Robert Russell will be available on Saturday to help novice entrants with their entries. We really hope you will come and join us at this really fun event.

## BALBOA PARK ROSE GARDEN VOLUNTEERS NEEDED

By Mary Rose, [bprosegardencorps@gmail.com](mailto:bprosegardencorps@gmail.com)



### Volunteers Needed for Balboa Park Rose Garden

**First Meeting of Season: Tuesday April 19, 2022, at 9:15 at the north end of the Rose Garden in the Gazebo.**

The Inez Grant Parker Memorial Rose Garden, 2125 Park Blvd in Balboa Park is accepting volunteers, novice or experienced, to join the Rose Garden Corps. Volunteers work in the garden trimming off dead blooms, weeding, raking, fertilizing, pruning and planting new varieties. Volunteers work Tuesday or Thursday mornings for 2-3 hours. A monthly meeting in the Rose Garden the third Tuesday of each month at 9:15 a.m. is used to share information and direct needed work. Volunteers learn about roses, and act as good will ambassadors to the many tourists who frequent our beautiful garden.

Tools needed: clippers, gloves, weeder, 5-gallon bucket

Rose Garden Corps volunteers receive excellent rose care training from experienced volunteers. This is a great chance to learn more about roses and contribute to a rose garden ranked one of the best in the world.

Interested in volunteering? Contact [bprosegardencorps@gmail.com](mailto:bprosegardencorps@gmail.com).



## Right Rose, Right Place: The Success of A Vanilla Rose

By Rita Perwich, Master Gardener and Consulting Rosarian [ritaperwich@gmail.com](mailto:ritaperwich@gmail.com)

Roses declare themselves in gardens in BIG LETTERS. They can't help it. It is in their DNA. There are very few plain vanilla roses. But don't ever under-estimate the power of vanilla. It can be a best seller and an all-time favorite.



German hybridizer Kordes crossed the red hybrid musk rose, 'Robin Hood' (1927) developed by Joseph Pemberton in England, and the white hybrid tea, 'Virgo' (1927), bred in France by Charles Mallerin. The cross produced 'Rosa 'KORbin'', a very healthy floriferous floribunda that bloomed in large clusters of medium-sized lightly double, white flowers. In 1958, this rose was introduced to the world. It is known as 'Iceberg' in the USA, 'Schneewittchen' (Snow White) in Germany and 'Fée des Neiges' (Snow Fairy) in France. Almost sixty-five years later, it has not dwindled in popularity. Its success is due to the fact that it is a fragrant, beautiful white rose that blooms abundantly in clusters on long stems. It repeat-flowers prolifically and continuously in warm climates for 10 months, taking a break only when it is pruned. The leaves are small, light green and glossy and it has few

prickles. Its pretty buds are long and pointed. The rose is disease resistant when planted in the sun with good air circulation, but it does sometimes get powdery mildew on the leaves and bloom peduncles. In some regions, it may also be prone to black spot. Pink spots on the blooms after it rains is an indication of botrytis, a water-borne fungal disease. Cut out and dispose of affected blooms immediately to prevent further spore infection.

'Iceberg' is the most easily recognizable and the most widely grown rose in the world. It is rated 8.4 in the American Rose Society's *Handbook for Selecting Roses*. In 1958, it was awarded a

Royal National Society Gold medal and in 1983 'Iceberg' received the *Most Favorite Rose* designation from the World Federation of Rose Societies. 'Iceberg' is not a flashy rose, but it stormed the rose world nonetheless with its versatility, ever-blooming nature and disease



resistance. There is a sport, 'Climbing Iceberg' with the same fragrant white blooms that was introduced in 1968 in the United Kingdom. 'Iceberg' can also be purchased as a tree rose. 'Blushing Pink Iceberg' and 'Brilliant Pink Iceberg' are sports of 'Iceberg', and 'Burgundy Iceberg' is a sport of 'Brilliant Pink Iceberg'. Every year my 'Burgundy Iceberg' will produce one or more white blooms, and a bloom or two with both white and burgundy petals. I always look forward to seeing the anomaly.

*continued on page 22*



Why is 'Iceberg' so popular? 'Iceberg' is not just a rose. It is also a wonderful landscape plant. And it's not just a great landscape plant, but one that blooms with white fragrant roses for many, many months. That is a hard act to beat! Easy to grow, it is planted to enhance home sidewalks and walkways, commercial landscaping, golf courses and also strip malls. It is a well-proportioned plant, 4 feet high and 3 feet wide, making it a good choice to grow as a successful hedge. In the right place, *Iceberg* is the right rose. In addition, University of California, Davis has included 'Iceberg' as an Arboretum All-Star performer for low water use.



Seeing 'Iceberg' so ubiquitously may make it seem boring, but when pruned and grown well, this white rose is easy on the eyes and imparts a calming and tranquil presence. Additionally, white has great versatility and compatibility in many garden and commercial settings.

But, don't get me wrong. Like many rosarians bitten hard with a deep passion for roses, I would not and could not restrict myself to 'Iceberg' roses. I am in agreement with Rev. Samuel Reynolds Hole, "There should be beds of roses, banks of roses, bowers of roses, edgings of roses, baskets of roses, vistas and alleys of roses," and these roses should be varied, and reflect every color, shape, class and fragrance. The world of roses is too wide and too beautiful to limit or restrain. But for the beginner rosarian or the homeowner with little

time to spare in the garden, and for the commercial landscape, 'Iceberg' rose is often a really good choice.

There was a saying my late father-in-law repeated often, and a choice he made that always puzzled me and challenged my comprehension. The saying was, "nothing succeeds like success". The choice? In an ice cream parlor with 31-flavors, he would unhesitating pick vanilla. 'Iceberg' is a beautiful classic rose, a performer, and totally versatile in many settings. Its attributes make it a best seller and an all-time favorite. The 'Iceberg' rose makes the saying, "nothing succeeds like success" ring true. It is a rose that helps me finally comprehend his saying and his choice.



## In Our Thoughts and Prayers.....

Please keep these members in your thoughts and prayers as they have been recovering from illness, injury or are recovering from surgery.

- ◆ Steve Berry
- ◆ Kathy Dunn

We received a notification from Miriam Yoder that her good friend Sheila Askin passed away recently. She had a stroke and had been battling cancer. She was very active in SDRS and won one of the very first Rose Bud awards. She also presented several programs on photography. May she rest in peace.



## A Celebration of Life for John Lester

Last year we lost one of our rose brothers, John Lester, after he gallantly struggled with some significant health issues. John was one of our valued members who loved to instruct others how to grow roses to their fullest potential. He also was an avid exhibitor of roses, participating in many rose shows. We will miss his infectious smile and his competitive spirit. His wife, Barbara, submitted this information about John's Celebration of Life.

**John Lester's Celebration of Life will be held on May 14, 2022 at 1 p.m. in the Fellowship Hall of Torrey Pines Christian Church, 8320 La Jolla Scenic Drive North.**

**A reception will follow on the outside lawn. Please come casual, as those who knew John know he only dressed up when he was judging roses.**

**If you would like to bring some roses from your garden in a vase to honor him, please plan to take the vase home with you and put your name on the bottom of the vase in case it gets left behind.**

**Barbara would love to have those who knew him say a few words about John (humor appreciated) please let her know ASAP if you would like to do this.**

**For purposes of seating and refreshments, it would be helpful if you could indicate that you are coming.**

**If you have questions, please contact Barbara: [roseloversjb@gmail.com](mailto:roseloversjb@gmail.com)**





# Bob Martin, an Exuberant Gardener, Exhibitor, Leader and Friend

A Poem by Pamela Nelson, Desert Rose Society



A man with such diverse talents is rare,  
but it is extraordinary that he was  
always willing to share

Generosity of spirit permeated his  
demeanor,  
who else opens his home to a  
national organization, and  
serves them a delicious meal, as it  
were

Bob's love of roses, drove him to  
reign,  
He was the President of the National  
ARS, and yet made the time to visit  
local societies to speak and explain.

An Auctioneer with a powerful style,  
Bob inspired everyone to learn more  
about each rose, and buy more with  
a smile

Writing and computing was a passion  
he eagerly pursued,  
he explained and added humor, so all  
could understand his wondrous  
attitude

Bob adored exhibiting roses of all  
kinds, colors and sizes,  
it was this intensity that inspired him  
to tally the results and analyze

As a consequence of all this Rose  
Shows' results collecting,  
Bob maintained an amazing website  
with this very information which  
helped  
Rose People connecting

For the very serious ninety exhibitors,  
he created the periodical, Horizon,  
Bob wanted the best for the roses,  
and wanted everyone to play to win!

Curiosity and work ethics combine to  
astound,  
all this wasn't enough, Bob took on a  
Worldwide record of roses, which is

profound

Joi de viv and enthusiasm for roses  
warmed his heart with a spark,  
it was his sincere feelings of  
friendship for so many, that fired his  
spirit and left a mark

Bob loved Dona with all of his soul,  
all of her talents, strengths and  
attributes, she was always his, "Ace  
In the hole"

With Dona, Bob found his true  
confidant, they fit like a glove,  
they shared a passion for a life of  
roses, a labor of love

Bob's love of roses wasn't just  
expressed with periodicals, national  
organizations, speeches and  
statistics,  
he was involved with all aspects of  
growing roses, from the exact way to  
plant them  
to the most careful method to hand  
pick

His magnificent garden was his  
favorite place of everywhere,  
it is the exquisitely planned  
masterpiece of Bob and Dona's  
love and care

Bob's last Rose show was a joyous  
miracle,  
he thrived on the huge show of  
glorious blooms, and beat his  
favorite competitor by one, which  
gave his genius a tickle

We all remember how Bob loved  
Yogi Berra's quotes, and how many  
he kept,  
So as Yogi Berra said, and describes  
our Bob, "We have deep depth"

## 37th Annual Spring Home/Garden Show at the Del Mar Fairgrounds

April 8, 9, 10

For Information: <https://springhomegardenshow.com/>



### Elegant and Enchanting Garden Tour

Hosted by the Rose Society of Saddleback Mountain

Saturday, May 7, 10 a.m.—4 p.m.

We have been invited to this 'Elegant and Enchanting Garden Tour'. It will be their 27th tour. It will be a beautiful pre-Mother's Day event, perfect for sharing time together. Tom and Miriam Cooney's garden with over 300+ roses is on the tour this year !

For information: <https://rosesocietyofsaddlebackmountain.org/garden-tour>

### La Jolla Historical Society Secret Garden Tour of La Jolla and Secret Garden Boutique

Saturday, May 14, 9 a.m.—6 p.m.

For information: <https://lajollahistory.org/events/secret-garden-tour-of-la-jolla-and-secret-garden-boutique/>

This unique event extends a rare invitation to the public to stroll behind the garden gates of some of La Jolla's loveliest secluded gardens, often concealed from view by mature trees, vines or foliage.



## Event Calendars and Web Sites

### San Diego Rose Society Calendar of Events 2022

**April 5, 2022: SDRS Board meeting; Beth Van Bortel's home**

**April 16-May 15, 2022: SDRS Open Gardens Events;** see pages 7-9 of this issue for details

**April 18, 2022, 7:00 p.m.—10 p.m.: SDRS Monthly meeting,** Casa del Prado, room 101; see page 2 of this issue for details

**April 30-May 1, 2022: San Diego Rose Society Rose Show with CCRS Save the Roses! Auction;** Ronald Reagan Community Center, El Cajon, CA; see page 4 of this issue for details

**May 3, 2022: SDRS Board Meeting**

**May 16, 2022: SDRS Monthly meeting**

### Other Local and Regional Gardening Events 2022

**April 8-10, 2022: 37th Annual Spring Home/Garden Show at Del Mar Fairgrounds;** see page 25 of this issue for details

**April 22-24, 2022: 66th Annual Pacific Southwest / District Convention & Rose Show;** Courtyard by Marriott in Monrovia; <https://www.pswdrose.org/calendar>

**May 7, 2022: Elegant and Enchanting Garden Tour** hosted by rose society of Saddleback Mountain; see page 25 of this issue for details

**May 14, 2022: La Jolla Historical Society Secret Garden Tour;** see page 25 of this issue for details

San Diego Floral Association Calendar <http://www.sdfloal.org/calendar.htm>

San Diego Botanic Garden Calendar <https://www.sdbgarden.org/events.htm>

### Useful Websites and Links

San Diego Rose Society ([www.sandiegorosesociety.com](http://www.sandiegorosesociety.com))

American Rose Society ([www.rose.org](http://www.rose.org))

American Rose Society Pacific Southwest District ([www.pswdrose.org](http://www.pswdrose.org))

Help Me Find (roses) ([www.helpmefind.com/rose](http://www.helpmefind.com/rose))

Rose Show Results (<http://www.roseshow.com/results/>)



## Process for Contacting Consulting Rosarians

By Elaine Ornelas, [cornelas1949@att.net](mailto:cornelas1949@att.net) and Beth VanBoxtel, SDRS webmistress

The listing below for consulting rosarians is also listed on the San Diego Rose Society's website, including phone numbers and email addresses. Our website is a public domain and can be viewed by everyone and is intended to be that way so that the public can harvest useful information about growing roses. However the email address can be accessed by 'web crawlers' and can be used to generate spam emails and spam phone calls. Listing emails and phone numbers is not a good idea with today's data breaches. So our board has decided, at our webmistress' encouragement, to not post emails and phone numbers.

So the procedure for contacting consulting rosarians is to use a generic contact email address, listed below. Once the user accesses this email the message goes directly to the webmistress who will forward the email on to the appropriate consulting rosarian. Hopefully this will prevent any adverse conditions which might have resulting from having the emails and phone numbers posted readily.

**SDRS email address: [sandiegorosesociety@gmail.com](mailto:sandiegorosesociety@gmail.com)**

### Consulting Rosarians for San Diego Rose Society

| <b>Name</b>                   | <b>Area</b>    | <b>County Location</b> |
|-------------------------------|----------------|------------------------|
| Christine Allan               | La Jolla       | W                      |
| Steve Berry                   | San Diego      | C                      |
| Frank Brines, Master Rosarian | San Diego      | E                      |
| Gary Bulman, Master Rosarian  | Escondido      | N                      |
| Linda Clark                   | La Mesa        | E                      |
| Ken Huff                      | Escondido      | N                      |
| Bob Kolb                      | Sunset Cliffs  | W                      |
| Deborah Magnuson              | Clairemont     | W                      |
| Carl Mahanay                  | Imperial Beach | S                      |
| Soledad "Rita" Morris         | San Diego      | C                      |
| Elaine Ornelas                | Clairemont     | W                      |
| Bill Ornelas                  | Clairemont     | W                      |
| Rita Perwich                  | Coronado       | W                      |
| Jim Price                     | San Diego      | C                      |
| Dwyn Robbie, Master Rosarian  | Del Mar        | W                      |
| Robert Russell                | Crest          | E                      |
| Natalie Stout                 | Kensington     | C                      |
| Sue Streeper, Master Rosarian | El Cajon       | E                      |
| Ruth Tiffany, Master Rosarian | San Carlos     | E                      |
| Beth Van Boxtel               | Encinitas      | N                      |

## List of Nurseries for Roses

Here is a list of nurseries which some of our rosarians commonly use to obtain roses.

Some of these are local and some are some distance from San Diego or are for on-line ordering only.

### LOCAL:

|                          |  |
|--------------------------|--|
| Armstrong Garden Centers | <a href="http://www.armstronggarden.com">www.armstronggarden.com</a>         |
| Walter Andersen          | <a href="http://www.walterandersen.com">www.walterandersen.com</a>           |
| Kniffings                | <a href="http://www.kniffingsnursery.com">www.kniffingsnursery.com</a>       |
| El Plantio Nursery       | <a href="http://www.elplantationnursery.com">www.elplantationnursery.com</a> |
| Hunters                  | <a href="http://www.huntersnursery.com">www.huntersnursery.com</a>           |
| Evergreen                | <a href="http://www.evergreennursery.com">www.evergreennursery.com</a>       |
| Waterwise Botanicals     | <a href="http://www.waterwisebotanicals.com">www.waterwisebotanicals.com</a> |

### NOT LOCAL, OR FOR ON-LINE ORDERING ONLY:

|                       |  |
|-----------------------|--|
| K and M Roses         | <a href="http://www.kandmroses.com">www.kandmroses.com</a>                   |
| Regan Nursery         | <a href="http://www.regannursery.com">www.regannursery.com</a>               |
| Wisconsin Roses       | <a href="http://www.wiroses.com">www.wiroses.com</a>                         |
| Palatine Roses        | <a href="http://www.palatineroses.com">www.palatineroses.com</a>             |
| Angel Gardens         | <a href="http://www.angelsingardens.com">www.angelsingardens.com</a>         |
| Laguna Hills Nursery  | <a href="http://www.lagunahillsnursery.com">www.lagunahillsnursery.com</a>   |
| Plant Depot           | <a href="http://www.plantdepot.com">www.plantdepot.com</a>                   |
| Rogue Valley Roses    | <a href="http://www.roguevalleyroses.com">www.roguevalleyroses.com</a>       |
| Green Thumb           | <a href="http://www.greenthumb.com">www.greenthumb.com</a>                   |
| Cool Roses            | <a href="http://www.coolroses.com">www.coolroses.com</a>                     |
| Otto & Sons           | <a href="http://www.ottoandsons-nursery.com">www.ottoandsons-nursery.com</a> |
| Heirloom Roses        | <a href="http://www.heirloomroses.com">www.heirloomroses.com</a>             |
| Burlington Roses      | <a href="http://www.burlingtonroses.com">www.burlingtonroses.com</a>         |
| Antique Rose Emporium | <a href="http://www.antiqueroseemporium.com">www.antiqueroseemporium.com</a> |
| Roses Unlimited       | <a href="http://www.rosesunlimitedsc.com">www.rosesunlimitedsc.com</a>       |

## Photo Credits for This Issue

Page 1: Photos submitted by Deborah Magnuson

Page 2: Photo of camera from internet; photo of Rose Hills Memorial Park from Rose Hills website

Page 6: Photos of artwork of Dawn Harrison by Dawn Harrison

Page 8: Photo submitted by Ruth Tiffany

Page 9: Photo of Beth Van Boxtel submitted by Beth Van Boxtel; photos of arrangement workshop submitted by Frank Brines

Page 11: Photo by Christine Allan

Page 12: Photos by Kristine Russell

Page 13-14: Photos by Elaine Ornelas

Page 15-16: Photo of Rita Perwich by Elaine Ornelas; rose photos by Rita Perwich

Page 16: Photos by Elaine Ornelas

Page 21-22: Photos by Rita Perwich

Page 23: Photos by Elaine Ornelas (photo of John Lester in the picture frame by Barbara Lester)

Page 24: Photo by Beth Smiley

---

### *Rose Ramblings*

#### **Newsletter of the San Diego Rose Society**

Editor: Elaine Ornelas, [ornelas1949@att.net](mailto:ornelas1949@att.net)

Assistant Editor: Sue Streeper, [streepersue@gmail.com](mailto:streepersue@gmail.com)

Webmaster and Social Media Coordinator: Beth Van Boxtel,  
[bethpaige@gmail.com](mailto:bethpaige@gmail.com)

Review and Printing: Linda Hitney, [linda.hitney@gmail.com](mailto:linda.hitney@gmail.com)